

# Educational Facts About the Transportation Penny

Richland County 2012  
Special Sales and Use Tax Referendum



# What is the Transportation Penny?

- The Transportation Penny is formally known as a “**Special Sales and Use Tax.**”
- According to the SC State Code of Laws §4-37-30, counties are empowered to impose this sales and use tax, pursuant to a referendum, not to exceed 1% as a source of revenue for highways, roads, streets, bridges, mass transit systems, greenbelts, and other transportation-related projects facilities including, but not limited to, drainage facilities relating to the highways, roads, streets, bridges, and other transportation-related projects.

# So What Does That Mean?

Because Richland County Council approved an ordinance authorizing the Transportation Penny to be placed on the ballot, Richland County citizens will have the opportunity to vote yes or no to an extra penny on the dollar to:

- Expand and enhance the bus system
- Improve the roadway network
- Increase the bicycle infrastructure
- Enhance the pedestrian facilities
- Further develop the greenways

# But First...a Little Background

- In 2006, Richland County Council established a 39 member citizen led Transportation Study Commission.
- This Commission held numerous public input meetings and completed a comprehensive study with the assistance from a global consulting firm which specializes in planning, development, design, construction, operations, and maintenance of critical infrastructure.
- The study addressed failing roads, the lack of sidewalks and greenway infrastructure, and the unstable bus system.
- The Council also sought the input of elected officials from the City of Columbia, as well as the CMRTA, the Central Midlands Council of Government (COG), the Chamber of Commerce, and the SC DOT.

# Background

- In 2010, Council proposed a 25-year, \$1 Billion Transportation Penny with 3 multi-modal transportation modes: Transit (CMRTA – Buses), Roadway, and Bike / Pedestrian / Greenway.
- The Transportation Penny appeared on the November 2, 2010 ballot, and did not pass.

# Background

- Currently, there are over **\$2.5 Billion worth of transportation funding needs** in Richland County.
- Because of the continued need, Richland County Council has decided to present an option to the voters to address high priority transportation needs.

**The Transportation Penny will appear on the November 6, 2012 Ballot.**

# What Will the Penny Look Like?

**The Transportation Penny would generate more than \$1 Billion over the span of 22 years.**

- If approved by voters, the Transportation Penny would be used to complete more than a billion dollars worth of high priority, multi-modal projects.

# The Breakdown

<b>Mode</b>	<b>Amount</b>
Roadway	\$656,020,644
Transit (CMRTA / Bus Service)	\$300,991,000
Bike/Pedestrian/Greenway	\$80,888,356
<b>Total Project Expenditures</b>	<b>\$1,037,900,000</b>
<b>Administrative Expenditures</b>	<b>\$32,100,000</b>
<b>TOTAL EXPENDITURES</b>	<b>\$1,070,000,000</b>



# 2012 Transportation Penny Summary

- **1 Penny on the Dollar**
- **Up to 22 Years**
- **Roadway** = Funds High Priority Projects
- **Transit (CMRTA / Bus Service)** = \$13.7M Annually (Current = \$5.47M Annually)
- **Bike / Pedestrian / Greenway** = Funds High Priority Projects
- **Up to \$450M Bonding Capacity**

# 2012 Additional Items

- An emphasis will be placed on local / small / minority firms. A process is to be developed to ensure participation by these firms.
- A partnership with DOT is recommended. The type and level of partnership is to be determined.
- An in-house Transportation Director was approved.
- Outside Program / Project Management Firm(s) will be procured.
- An oversight / accountability / “watchdog” committee will be created.

# 2010 vs. 2012 Transportation Penny

	<b>2010</b>	<b>2012</b>
<b>Number of Years</b>	Up to 25 Years	Up to 22 Years
<b>Amount</b>	1 Penny on the Dollar	1 Penny on the Dollar
<b>Modes of Transportation</b>	<u>3</u> : Transit (CMRTA – Bus Service); Roadway; Bike / Pedestrian / Greenways	<u>3</u> : Transit (CMRTA – Bus Service); Roadway; Bike / Pedestrian / Greenways
<b>\$ for Projects</b>	\$1.03 Billion	\$1.04 Billion
<b>Bonding Capacity</b>	Up to \$200M	Up to \$450M
<b>Other</b>	na	Additional Items

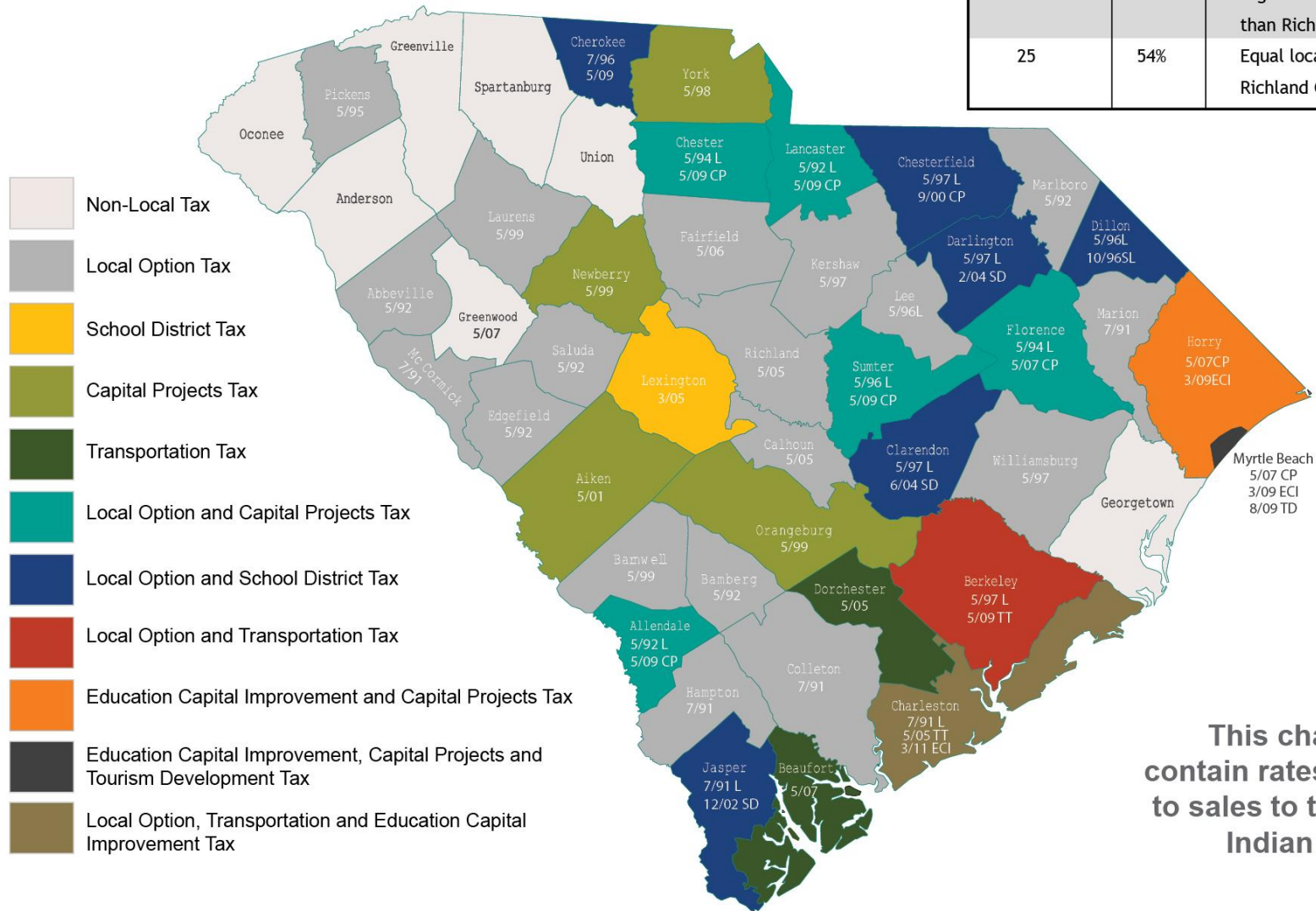
# The Transportation Penny Would Increase Sales Tax

The Transportation Penny would increase sales tax in Richland County from seven cents on the dollar to eight cents on the dollar\* on gross proceeds of sales.

\*The Transportation Penny would increase sales tax from one cent on the dollar to two cents on the dollar on groceries. (Exception: Purchases made with Food Stamps, as well as all local tax exemptions allowed per State Statute are exempt from the Transportation Penny.)

# Effective July 1st, 2012

# of Counties	%	Local Tax Designation
7	15%	No local taxes.
14	30%	Higher local tax rate than Richland County.
25	54%	Equal local tax rate of Richland County.



**This chart does not contain rates applicable to sales to the Catawba Indian reservation**

# Local Sales Tax Rates by County

Anderson 6%	Calhoun 7%	McCormick 7%	Chesterfield 8%
Georgetown 6%	Colleton 7%	Newberry 7%	Clarendon 8%
Greenville 6%	Dorchester 7%	Orangeburg 7%	Darlington 8%
Greenwood 6%	Edgefield 7%	Pickens 7%	Dillon 8%
Oconee 6%	Fairfield 7%	Richland 7%	Florence 8%
Spartanburg 6%	Hampton 7%	Saluda 7%	Horry 8%
Union 6%	Kershaw 7%	Williamsburg 7%	Jasper 8%
Abbeville 7%	Laurens 7%	York 7%	Lancaster 8%
Aiken 7%	Lee 7%	Allendale 8%	Sumter 8%
Bamberg 7%	Lexington 7%	Berkeley 8%	Charleston 8.5%
Barnwell 7%	Marion 7%	Cherokee 8%	
Beaufort 7%	Marlboro 7%	Chester 8%	

# Everyone Would Contribute

Richland County residents and Non-Richland County residents would pay the extra penny on the dollar.

# The Transportation Penny Projects Would Occur Countywide

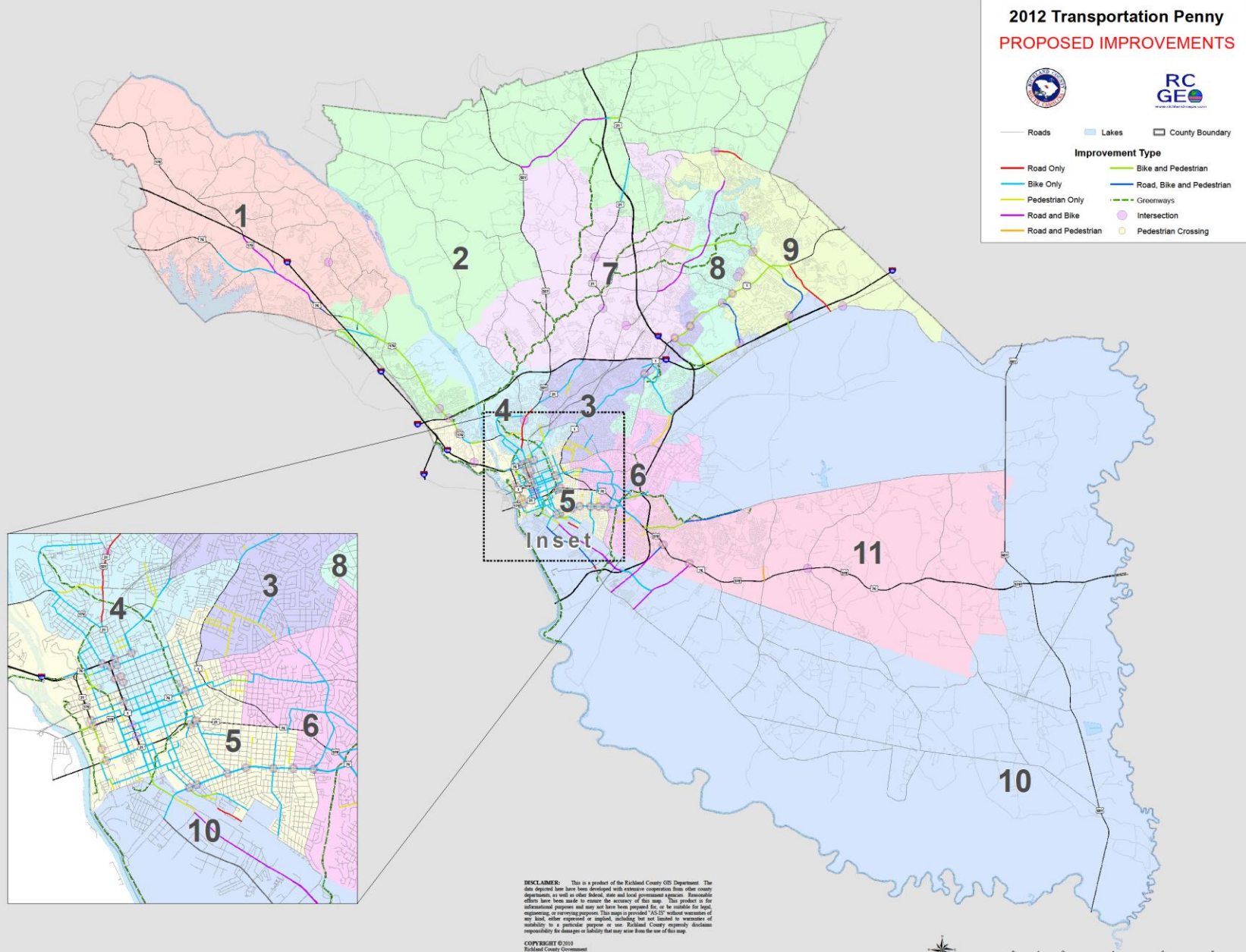
The proposed Transportation Penny projects will impact the transportation needs countywide. All County Council Districts would see improvements in roadways, bicycle and pedestrian pathways, new and improved greenways, and expanded bus service.



# 2012 Transportation Penny PROPOSED IMPROVEMENTS



- Roads
  - Lakes
  - County Boundary
- Improvement Type**
- Road Only
  - Bike Only
  - Pedestrian Only
  - Road and Bike
  - Road and Pedestrian
  - Bike and Pedestrian
  - Road, Bike and Pedestrian
  - Greenways
  - Intersection
  - Pedestrian Crossing



**DISCLAIMER:** This is a product of the Richland County GIS Department. The data depicted here have been developed with extensive cooperation from other county departments, as well as other federal, state and local government agencies. Reasonable efforts have been made to ensure the accuracy of this map. This product is for informational purposes and may not have been prepared for or be suitable for legal, engineering, or surveying purposes. This map is provided "AS IS" without warranties of any kind, either expressed or implied, including but not limited to warranties of suitability for a particular purpose or use. Richland County expressly disclaims responsibility for damages or liability that may arise from the use of this map.

**COPYRIGHT © 2010**  
Richland County Government  
2020 Hampton Street  
Columbia, SC 29204



# The Process is Transparent

- Throughout the length of the Transportation Penny process, the County will provide updated information regarding Transportation Penny expenditures and project updates.
- Moreover, Richland County Council has established a citizen committee that would provide oversight during the Transportation Penny process. A complete list of projects is available at [www.rcgov.us](http://www.rcgov.us).

# What You'll See: Ballot Question #1

## QUESTION 1

I approve a special sales and use tax in the amount of one percent (1%) to be imposed in Richland County, South Carolina (the "County") for not more than twenty-two (22) years, or until a total of \$1,070,000,000 in sales tax revenue has been collected, whichever occurs first. The sales tax revenue will be used to pay the costs of administrative expenses and the following projects:

Project 1: Improvements to highways, roads (paved and unpaved), streets, intersections, and bridges including related drainage system improvements.

Amount: \$656,020,644

Project 2: Continued operation of mass transit services provided by Central Midlands Regional Transit Authority including implementation of near, mid and long-term service improvements.

Amount: \$300,991,000

Project 3: Improvements to pedestrian sidewalks, bike paths, intersections and greenways.

Amount: \$80,888,356

YES

NO

Instructions to Voters: All qualified electors desiring to vote in favor of levying the special sales and use tax shall vote YES and

All qualified electors opposed to levying the special sales and use tax shall vote NO

# What You'll See: Ballot Question #2

## **QUESTION 2**

I approve the issuance of not exceeding \$450,000,000 of general obligation bonds of Richland County, payable from the special sales and use tax described in Question 1 above, maturing over a period not to exceed twenty-two (22) years, to fund projects from among the categories described in Question 1 above.

YES

NO

Instructions to Voters: All qualified electors desiring to vote in favor of the issuance of bonds for the stated purposes shall vote YES and  
All qualified electors opposed to the issuance of bonds for the stated purposes shall vote NO

# For More Information

- Detailed information regarding the Transportation Penny is currently on Richland County's website.
- Please visit [www.rcgov.us](http://www.rcgov.us) and click on the Transportation Penny logo at the top of the home page.

# We Provide Educational Outreach

- County staff is available to provide educational presentations to your community, business, civic, and neighborhood organization.
- To schedule an educational presentation, or if you have questions or comments , call (803) 576-2050, or e-mail [transportationpenny@rcgov.us](mailto:transportationpenny@rcgov.us).

**Thank You**  
for your interest in the Richland  
County Transportation Penny.